



Florida Department of Health in Orange County

# 2016 Annual Report

---

Protecting Your Health  
It's What We Do





# CONTENTS

Letter from the Health Officer	3
The Organization	4
Essential Health Services	5
Orange County, Florida	6-7
Women, Infants and Children (WIC)	8-9
Healthy Start	10-11
Bellies, Babies, and Beyond	11-12
Dental Health	14
Environmental Health	16-19
Epidemiology	20-21
Family Planning and Prenatal Health	22-23
Immunizations	24
School Health	25-26
Healthiest Weight Florida	27-28
World Heart Day	29
Public Health System Assessment	30-31
Prudential Productivity Awards	32
Public Health Week	33
Minority Health Month	34-35
Financial Highlight	36
Client Demographics	37-39
Locations	40
Programs & Services Overview	41
DOH-Orange Cares	42-43



Kevin M. Sherin, M.D., M.P.H., M.B.A

# Message from the Health Officer & Director

The focus of this 2016 Annual Report is to highlight the many ways we continue in our unwavering efforts to spread the public health message and to improve our public health system. The vision of the future is to become the Healthiest Nation by 2030. It is safe to say that we have become a remarkably healthier nation. Since the beginning of the 21st century, the nation's public health system and its governmental public health departments have played an important role in this progress. Through our efforts to not only make health accessible to our community, but to provide quality health services to the community we serve, we

evaluate policies, procedures, and measures that make our public health system function. The Department of Health in Orange County (DOH-Orange) forms part of Florida's vision of becoming the Healthiest State in the Nation. This year Florida became the first state in the nation to receive national accreditation as an integrated department of health through the Public Health Accreditation Board (PHAB). Accreditation by PHAB signifies that the department, including the state health office and all 67 county health departments, is meeting national standards for ensuring that essential public health services are provided in the community. Accreditation will continue to guide the department's fulfillment of the 10 Essential Public Health Services and will lead to continuous improvement in service, value and public accountability.

Throughout this report, you will learn a bit more about how our county health department plays a role in the 10 Essential Public Health Services. Locally, we work with our staff and community partners to establish goals that will play a large role in improving the health of Orange County residents. Within our agency, we house different areas such as health protection, outbreak surveillance, emergency preparedness, health promotion, and disease prevention. Although different program areas in different locations, DOH-Orange works collectively on the implementation of quality improvement measures necessary to create a culture of quality that will help move the needle towards a healthier county.

It is a privilege to serve as director of a workforce which strives to make Orange County a healthier place to live, work, and play. I thank the staff of the Florida Department of Health in Orange County for their continued dedication and commitment to ensuring the public's health each and every day.

Protecting Your Health...It's What We Do!



Kevin M. Sherin, M.D., M.P.H., M.B.A

# The Organization

## **Mission**

To protect, promote, and improve the health of all people in Florida through integrated state, county and community efforts.

## **Vision**

To Be The Healthiest State  
in the Nation

## **Values (I CARE)**

### Innovation

We search for creative solutions and manage resources wisely.

### Collaboration

We use teamwork to achieve common goals and solve problems.

### Accountability

We perform with integrity and respect.

### Responsiveness

We achieve our mission by serving our customers and engaging our partners.

### Excellence

We promote quality outcomes through learning and continuous performance improvement.

# The 10 Essential Public Health Services

**ES1: Monitor** health status to identify community health problems.

**ES2: Diagnose and investigate** health problems and health hazards in the community.

**ES3: Inform, educate, and empower** people about health issues.

**ES4: Mobilize** community partnerships to identify and solve health problems.

**ES5: Develop** policies and plans that support individual and community health efforts.

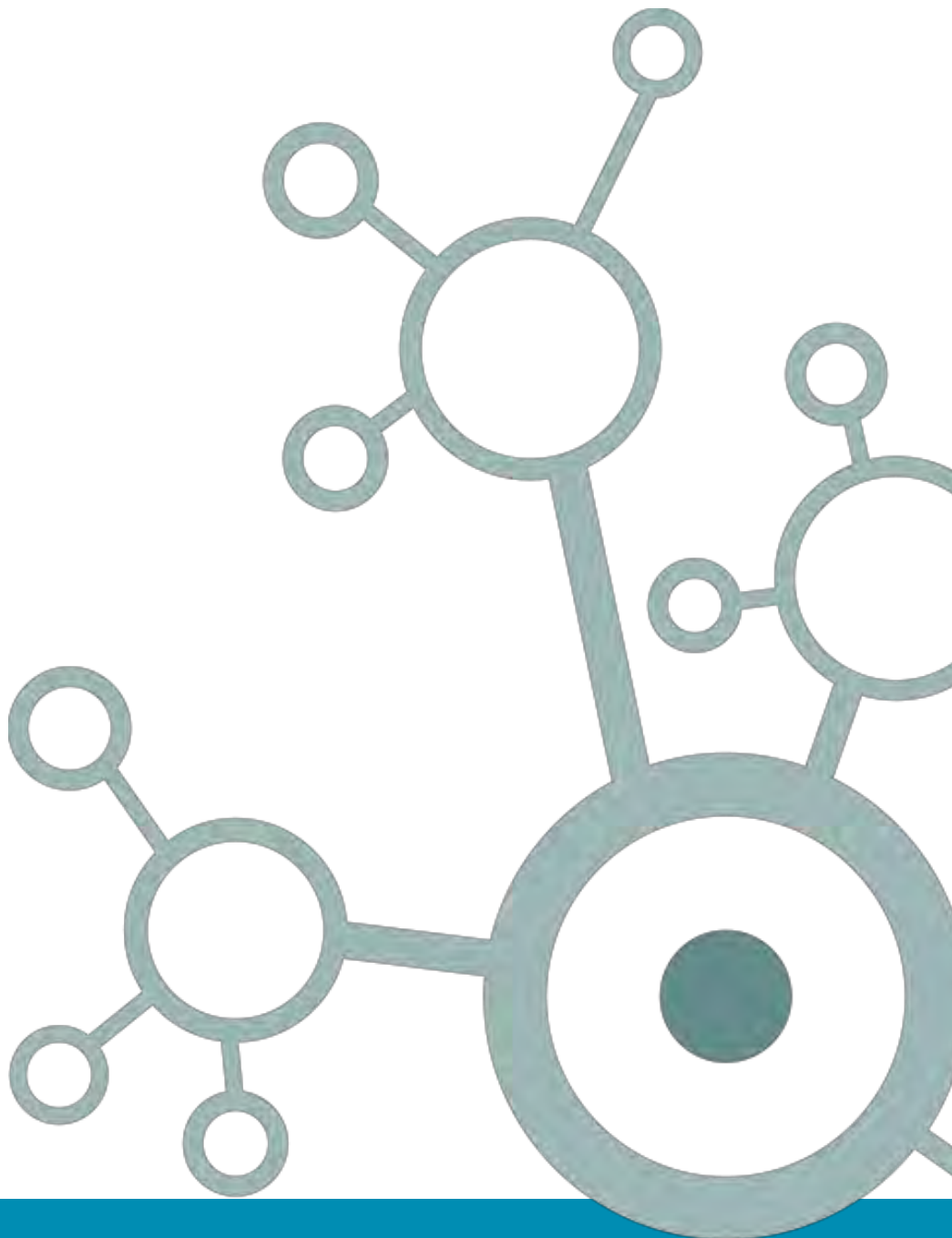
**ES6: Enforce** laws and regulations that protect health and ensure safety.

**ES7: Link** people to needed personal health services and assure the provision of health care when otherwise unavailable.

**ES8: Assure** a competent public health and personal healthcare workforce.

**ES9: Evaluate** effectiveness, accessibility, and quality of personal and population-based health services.

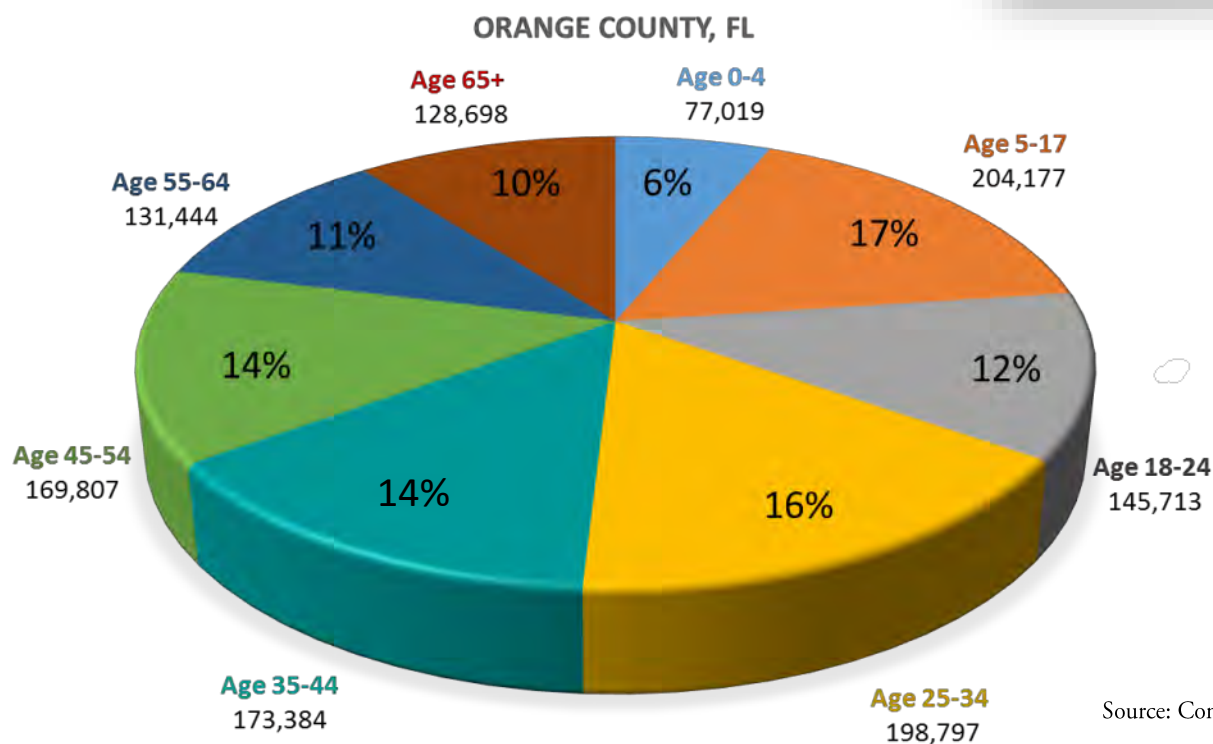
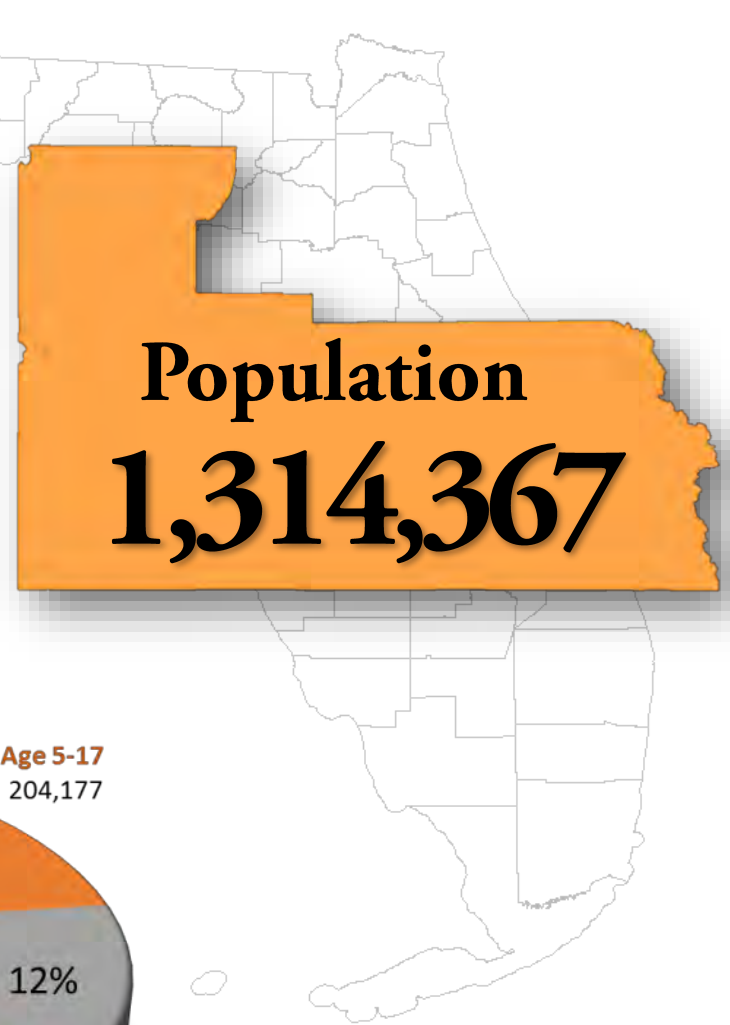
**ES10: Research** for new insights and innovative solutions to health problems.



# Orange County, Florida

**Orange County** has a total of 903 square miles of land and 99 square miles of water, and it is located in Central Florida. It is bordered on the north by Seminole County, east by Brevard County, south by Osceola County, and to the west by Lake County. Orange County is home to over 1,314,367 residents. There are 13 municipalities in the county; the *City of Orlando* accounts for over 21% of the population. Orlando is the largest inland city in Florida.

The county is located in what is known as the *Orlando-Kissimmee-Sanford Metropolitan Statistical Area* (MSA). The City of Orlando, known as the City Beautiful, is one of the top five travel destinations in America. It welcomes over 60 million national and international visitors every year.



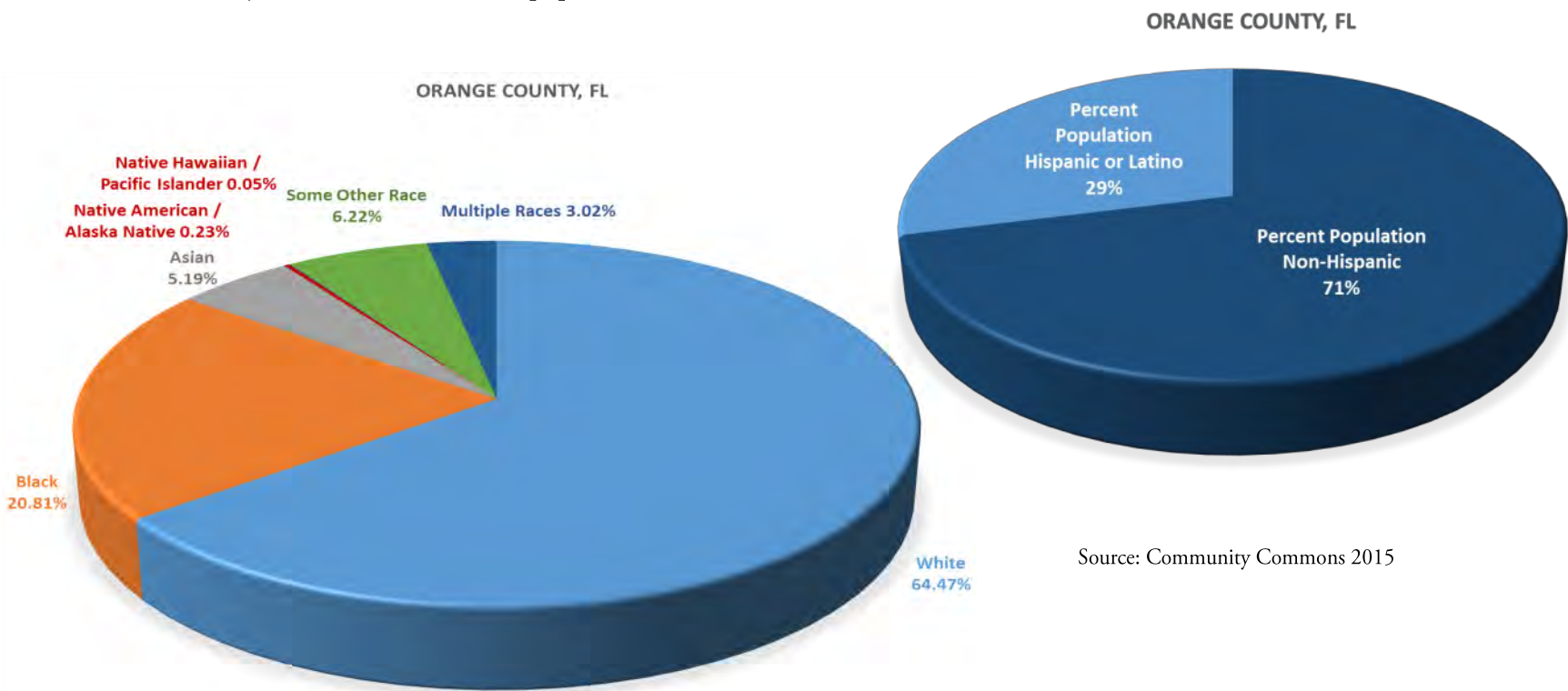
Source: Community Commons 2015

Orange County is the state's **5th** most populous county, home of **6.3%** of Florida's overall population. It is also the **16th** fastest-growing county in Florida, experiencing a population growth of **37.1%** between the 2000 and 2010 census counts, surpassing the state's growth rate of **22.9%**. If this growth rate continues, it can be predicted that by 2020 Orange county will have an estimated population of **1,387,675**.



The county is very diverse with a **64.47%** of the population identifying as White; **20.81%** identifying as Black; **5.19%** identifying as Asian; **28.72%** identifying as Hispanic. Hispanics are the largest ethnic minority in Orange County, comprising **29.8%** of the total population. From 2011 to 2015, there has been a **19.58%** growth increase in the Hispanic community, compared to a 6.62% growth increase in the Non-Hispanic community. Over 50% of the county's population is Female and 49.14% is Male. Overall, the age distribution of Orange County is 22.9% under 18 years of age, 66.7% between 18 and 64 years, and 10.47% over 65; the county has a fairly young population. Median household income is **\$56,447**, which is slightly lower than the state median household income. Median household income is the most widely used measure for income due to the fact that it is less impacted by high and low incomes. A family's income has the ability to define their access to affordable housing, healthcare, higher education opportunities, and food. In 2015, **212,489** (17.7%) of the population had incomes below 100% of the Federal Poverty Level (FPL); from that population, **70,549**

(25.5%) are under age 18. The lack of health insurance is considered a key driver of health. Lack of insurance is a primary barrier to health access including primary care, specialty care, and other health services that contribute to poor health status. The county (**20%**) has a slightly higher uninsured population percentage than the state (18%). Education is also a very strong predictor of health. Orange County is doing well with high school graduation and higher education rates. From the average freshmen base enrollment (14,573), **79%** students receive their high school diploma within four years. Although the rate (79%) is lower than the Healthy People 2020 target, Orange County's rate surpasses both state and national rates of the same measure. From the total population age 25+, **41.6%** hold an associate degree or higher; **31.1%** hold a bachelor's degree or higher. These rates could possibly hold a correlation to the low unemployment rate of the county (**4.1**) compared to the state. Unemployment rates have been steadily decreasing in the county since the year 2010.





# WIC and Nutrition Services

WIC is a federally funded nutrition program for Women, Infants, and Children. WIC provides the following at no cost: healthy foods, nutrition education and counseling, breastfeeding support, and referrals for health care and community services.



**108 staff**

- 18 Licensed Nutritionists
- 23 Nutrition Educators
- 8 Breastfeeding Staff
- 59 Support Staff

## Our Services:

WIC provides screening for income, physical presence and address, and then provides nutritional risk assessment, counseling and education for WIC clients in 8 separate sites throughout Orange County. In addition, WIC provides prescribed foods for clients that they then purchase through **Electronic Benefits Transfer (EBT)** in 126 locally authorized grocery stores.

Redemptions in 2016 totaled **\$25,307,489.40** for an average of \$2,108,957.45 per month spent in the community.

WIC and Nutrition Services also provides services for Head Start clients in need of specialized diets through consultation with Orange County Head Start staff.



In 2016, WIC provided :  
**404,728 services**  
to **85,441 clients**

# 10 Essential Health Services

## The Role We Play

**ES1: Monitor Health Status** — This is done on an on-going basis to assess how we are performing on key indicators such as prenatal entry, breastfeeding, and overweight children. We include these indicators as objectives in our annual Nutrition Education Plan. Individually, each client is weighed, measured, and has their hemoglobin tested to monitor their individual growth and iron status.

**ES3: Inform, educate and empower** — WIC staff does this on a daily basis as part of their normal work activities. Education is a key component in the WIC program.

**ES4: Mobilize community partnerships** — WIC staff participate in many health fairs with our community partners throughout the year as part of our ongoing outreach efforts. We also actively visit physician offices to educate providers on the WIC program.

**ES5: Develop policies and plans** — When needed internal procedures are written to outline best how to serve our clients. Senior leadership are tasked with writing at least one policy/procedure annually.

**ES6: Enforce laws and regulations** — Our WIC Vendor Manager does compliance reviews on our 126 vendors (grocery stores that are authorized to accept WIC EBT) annually to make sure that WIC foods are sufficiently available and that the rules established by the WIC program are being followed. In addition, they work with the State WIC Program office to conduct investigations on an as needed basis.

**ES7: Link people to needed personal health services** — Included as part of the charge for WIC is to refer clients to needed health and other services for which they may qualify or need.

**ES8: Assure a competent workforce** — Regular training is conducted and meetings held with staff at least twice yearly in addition to tracking that they complete any mandatory trainings within the designated timeframes. WIC Supervisors meet monthly to discuss issues and then that information is shared with staff at sites via monthly home team meetings.

**ES9: Evaluate services** — Ongoing QA reviews are conducted of all 8 WIC locations that provide services. The QA reviews are performed by Administration staff as well as supervisors for the purpose of achieving consistency of services and personal performance reviews.

### Our Goal?

*To provide eligible clients with nutrition education and nutritious foods to give them the best possible pregnancy outcome and optimal growth for children through preschool years. We encourage women to breastfeed for as long as possible.*



# Healthy Start

For more than 20 years, **Healthy Start** has been providing assistance to pregnant women, interconception women, infants, and children up to age three to obtain the health care and social support needed to reduce the risks for poor maternal and child health outcomes.

## 81 staff in 4 programs



**1** Healthy Start  
Care Coordination  
**57 Employees**  
Served **9,545** Families  
(5,011 Pregnant Women | 4,534 Infants)

**2** MomCare  
**7 Employees**  
Served **8,534** Pregnant Women

**3** Nurse Family Partnership  
**5 Employees**  
Served **50** clients

**4** Bellies, Babies and Beyond  
**12 Employees**  
Served **574** clients

### Our Services:

**Healthy Start** offers care coordination services to all pregnant women and infants regardless of their socioeconomic status to ensure that early care is directed to those families where there is the best chance of preventing or minimizing adverse outcomes.

**MomCare** is a program that operates under the umbrella of Healthy Start to ensure access to care for all Medicaid-eligible pregnant women.

**Nurse Family Partnership** is a voluntary program that partners first-time moms with nurses. It is an evidence-based, community health program that operates under the umbrella of Healthy Start to transform lives of vulnerable, first-time mothers living in poverty by improving prenatal care, quality of parenting and life prospects for mothers by partnering them with a registered and trained home visiting nurse.

**Bellies, Babies and Beyond** program is a Healthy Start initiative designed to work with women and their families before, during and after pregnancy, engaging pregnant women and continuing to serve the family through the baby's second birthday.

# 10 Essential Health Services

## The Role We Play

**ES3: Inform, educate and empower** — Our program works to inform, educate and empower pregnant and parenting women and families to healthy birth outcomes.

**ES7: Link people to needed personal health services** — We link families to prenatal care, well women care and well child visits to assure the provision of healthcare services are provided.

**ES8: Assure a competent workforce** — Assure competent and personal healthcare workforce by educating clients on the important factors to have a healthy pregnancy and the Healthy Start workforce on maternal child health evidence based curriculums, Edinburgh Perinatal Depression Screening, and Smoking Cessation and Reduction in Pregnancy Treatment.

**ES9: Evaluate services** — We evaluate effectiveness, accessibility and quality of personal and population-based health services on an ongoing basis to improve the overall health of the community. This is done by conducting ongoing quality improvement activities which include: Plan, Do, Check, Act (PDCA), client surveys, and audits of the provision of services.

### Our Goal?

*To reduce infant mortality, reduce the number of low birth weight babies, and improve the health and developmental outcomes of all Orange County infants.*

## BB&B Bellies, Babies, and Beyond

A Health Resources & Service Administration (HRSA) Grant Funded Healthy Start Program

### Services Provided

- Health care for women and babies, including immunizations
- Care coordination, home visiting and linkage to community resources
- Linkages to health insurance
- Nutritional counseling and breastfeeding support
- Perinatal depression screening and linkage to behavioral health services
- Interconception education and reproductive life planning
- Child development education and parenting support
- Workshops for fathers



# 10 Essential Health Services

## The Role We Play



### **ES3: Inform, educate and empower**

– The women who participate in the BB&B project receive an array of services which include prenatal care in a group setting, prenatal education, mental health

services, case management, and breastfeeding support. To achieve the goal of improving birth outcomes, the BB&B project utilizes an evidenced based model known as Centering. Centering replaces routine individual visits. Through Centering, women are brought together with other women who are at the same stage of pregnancy or infant care for their billable visit. Women take their own blood pressure, weigh themselves, set personal goals and have an individual check-up with their clinician. Then the group along with the clinician engages together in a facilitated discussion around important health topics.

### **ES7: Link people to needed personal health services**

– BB&B links people to needed health services and assures the provision of health care when otherwise unavailable. In 2013, the infant mortality rate in

Orlando, FL (Orange County) was at its highest rate of 7.5 per 1,000 live births. Orange County is one of 9 counties with considerably higher infant mortality rates than expected. The rate for Black babies was 13.5 which was more than twice the rate of Hispanic babies (6.5) and White babies (5.6). Eight Orange County ZIP codes were identified as areas with the worst rates: 32805, 32808, 32809, 32811, 32818, 32819, 32835, and 32839. Some of the contributing factors that have led to the escalating increase of infant mortality are poor eating habits, lack of prenatal care, stress, substance/drug abuse, etc.

The affected areas proved to be in great need of an intervention. The Florida Department of Health in Orange County was awarded the HRSA Healthy Start Initiative: Eliminating Racial/Ethnic Disparities grant in September 2014. The HRSA grant currently funds the Bellies, Babies, and Beyond (BB&B) project. The BB&B project targets Black and Hispanic women in the mentioned zip codes. The project's main objective is to improve birth outcomes in hopes of lowering the infant mortality rate.

## Program Goals:

- Promote comprehensive service coordination, prevention and health promotion.
- Improve women's health before, during, and after pregnancy among Black and Hispanic pregnant women in the geographic areas that were deemed with the highest rates of infant mortality.
- Promote comprehensive service coordination, prevention and health promotion, workforce competence, and use of standardized curricula and interventions for target populations in Orange County, Florida.
- Strengthen family resilience to address toxic stress, support mental and behavioral health, promote father involvement, and improve parenting for target populations in Orange County, Florida.
- Provide screening for perinatal depression and intimate partner violence to at least 250 pregnant women, and father involvement education and training to 80 fathers annually by May 31, 2019.

*Currently the only approved CenteringPregnancy site within Central Florida and one of three within the State of Florida.*



# *Are you Centering?*



# Dental Health

The Dental Health Program provides preventive dental services to eligible children and adults.



9 staff

- 3 Dentists
- 1 Administrative Assistant
- 3 Dental Assistants
- 1 Temporary Dental Assistant
- 1 Senior Clerk

4,000  
patients



DOH-Orange Dental Bus Unit

## Our Services

### Preventive Dental Care

- Cleanings
- Examinations
- X-rays
- Fluoride placement
- Oral hygiene instruction
- Sealant placement

### Emergency Dental Treatment

- Emergency examination
- Oral evaluation
- X-rays
- Prescriptions
- Emergency extractions

### Routine Dental Service

- Fillings
- Routine extraction

## Our Efforts

- ⇒ Partnership with the Dental Care Access Foundation (DCAF)/Dental Society of Orlando to provide services to uninsured adults at the Hoffner Dental Clinic.
- ⇒ ACHA Grant Awarded to DOH-Orange Dental program to provide services to under-insured and uninsured children and

Hoffner Dental Clinic

5449 S. Semoran Boulevard, Suite 19B, Orlando, FL 32822



# Our Goal?

*To improve access to dental care  
to the citizens of Orange  
County.*

# Environmental

## Environmental Health, Tobacco and Injury Prevention



**60 staff  
members**

**35,655  
services  
provided**

### Our Services:

We conduct inspections and permit Migrant Labor Camps, Mobile Home Parks, RV Parks, Tattoo, Tanning and Body Piercing establishments, Group Care and Food establishments to include schools, bars, farms related to compassionate use, foster homes and assisted living facilities. We also regulate public swimming pools, bio-medical waste generating facilities, drinking water wells and septic systems. We are responsible for investigating complaints and providing assistance related to sanitary nuisances, rodents, animal bites, indoor air quality, mosquitos, radon, lead, asthma, food and water borne illnesses. The office also reduces tobacco use in Orange County by linking tobacco users to cessation services, encouraging worksites and public housing facilities to offer cessation services and tobacco free policies, conducting point of sale surveys at tobacco vendors and maintaining collaborations with partners in the community to abate

tobacco use including the sponsorship of six Students Working Against Tobacco (SWAT) clubs consisting of over 700 students. The office also looks at community sized environmental health problems through our board and workgroup participation, PACE-EH, providing a public health perspective on municipal planning efforts and the built environment by participating on Community Health Improvement Plan (CHIP), Community Health Assessment (CHA), Complete Streets and Health Impact Assessments as well as through our grass roots, employee lead Community Environmental Health Efforts which include; Injury Prevention, Community Outreach and Promotion, Asthma and Tobacco, Employee Engagement, Healthiest Weight, emergency preparedness through our EH Strike Team, Environmental Cleanup, Habitat for Humanity, Employee Development and Zoonosis.



# 10 Essential Health Services

---

## The Role We Play

**ES1: Monitor** — Environmental and health status to identify and solve community environmental public health problems. This includes monitoring drinking water samples and animal bite victims.

**ES2: Diagnose and Investigate** — Environmental public health problems and health hazards in the community. Sanitary Nuisances, mosquitos, rodents and point of sale practices are all examples of this.

**ES3: Inform, educate, and empower** — People about environmental public health issues. This occurs regularly through our interactions with the public and policy makers as well as through our SWAT clubs and Community Environmental Health initiatives.

**ES4: Mobilize** — Community partnerships and actions to identify and solve environmental health problems. We participate on a variety of Boards, Workgroups and Partnerships including; the Florida Asthma Coalition, the Tobacco Free Florida Partnership in Orange County, Healthy Central Florida, Healthy Winter Park, Bike Walk Central Florida, Best Foot Forward, the Holden Heights CDC and the Good Food Policy Council of Central Florida.

**ES5: Develop policies and plans** — That support individual and community environmental public health efforts. We effect policy change by educating partners and elected officials regarding environmental health and tobacco issues and by participating on workgroups to address policies.

**ES6: Enforce** — Laws and regulations that protect environmental public health and ensure safety. Most of Environmental Health's day to day activities include enforcing public health laws and State statutes in Orange County.

**ES7: Link** — People to needed environmental public health services and assure the provision of environmental public health services when otherwise unavailable. This is an important part of what we do and is completed through our partnerships and work group memberships.

**ES8: Assure** — A competent environmental public health workforce. This is accomplished through the standards for training and certification as established by State and National certification boards, the agency expectations as well as through our Employee Development and Employee Engagement committees.

**ES9: Evaluate** — Effectiveness, accessibility, and quality of personal and population-based environmental public health services. The Environmental Health, Tobacco and Injury Prevention office currently has four Six Sigma trained Green Belts and is working to certify two more. Quality and Process Improvement is practiced and has been recognized through the receiving of numerous Prudential Productivity Awards.

**ES10: Research** — For new insights and innovative solutions to environmental public health problems. The Environmental Health office received a grant this year to test the effectiveness of utilizing Mosquito Fish to abate mosquito larva in swimming pools at abandoned homes instead of utilizing larvicidal chemicals. We were awarded the Downtown Orlando Partnership Golden Brick award for this project.

# Our Goal?

*To create the healthiest places  
for people to live, work and play  
in Orange County, Florida.*

## Our Efforts

We established the Community Environmental Health efforts in our office three years ago to meet the requirements of the state's annual performance expectation, to create leadership and development opportunities for staff, to increase our education, service and outreach efforts and to improve environmental health in the community. Since the program's initial creation, we have had over thirty teams of employees engaged in broad community based environmental health efforts

and have since increased our membership to include staff from other departments. The Community Environmental Health initiatives for 2016 included: Injury Prevention, Community Outreach and Promotion, Asthma and Tobacco, Employee Engagement, Healthiest Weight, emergency preparedness through our Environmental Health (EH) Strike Team, Environmental Cleanup, Habitat for Humanity, Employee Development and Zoonosis.



# Zika & Zoonosis

## An Environmental Health Project

Because of the threat of Zika and other mosquito borne illnesses, the Environmental Health office is required by Florida Statute 386.041, to investigate any condition determined to constitute a sanitary nuisance and may take action to abate the said condition. There are a number of green swimming pools in many backyards in Orange County and because of the short flight range of the mosquito that carries Zika, these pools can become breeding grounds for mosquito borne illnesses. We were treating these pools with a larvicidal “dunk” which is only effective for 30 days so the pools required multiple visits and the larvicide could only be applied by our

certified pesticide applicator. After getting a small grant through the CDC and the Florida Department of Health BRACE program, we were able to create a mosquito fish demonstration project within the office. On September 13<sup>th</sup> 2016, the Zoonosis team deployed the first 50 fish into a local green pool. Signs were also posted on site to inform the public that mosquito fish are hard at work on the property. Some information about the fish: *Gambusia* is the genus of mosquito fish. The mosquito fish we deployed were wild caught in Florida and housed in our office tanks. They are fairly small (0.5” to 3”), eat invertebrates, invertebrate larvae, algae, and

even baby mosquito fish. Turtles, frogs, and snakes are predators to the mosquito fish. They are live bearers, meaning they do not lay eggs. Mosquito fish can live about 1-2 years and can be used as a mosquito biological control agent in untreated (abandoned) swimming pools as well as artificial ponds, ditches, and swales. After initially deploying the fish, the pool was revisited and the fish were found alive and well with no mosquito larva seen. Since this initial effort, this project has been duplicated in other pools in Orange County with similar results. Our program was awarded the Downtown Orlando Partnership “Golden Brick” award for Sustainability and Environmental Initiatives.



# Epidemiology

The Epidemiology Department conducts disease surveillance, investigates suspected occurrences of infectious disease and conditions and monitors, identifies and mitigates transmission of emerging pathogens as required by Florida Statutes 381, Rule 64D-3. In 2016, the department identified and investigated 36 outbreaks caused by parasitic, viral and bacterial pathogens and investigated over 3600 reportable diseases and conditions. The department houses the Perinatal Hepatitis B Prevention Program which, in 2016, served 45 surface antigen pregnant females to ensure that their babies and household contacts would be case managed to prevent Hepatitis B transmission from occurring. In addition, the

Hepatitis Prevention Program also housed within the Epi Department provided over 1700 services to individuals and provided Hepatitis A (151) and Hepatitis B (343) vaccines in collaboration with partner agencies. Each year there are over 1400 animal exposures in Orange County that require additional follow up from the Rabies Prevention Program. In 2016, the Epidemiology Program identified and managed 70 exposures requiring rabies post exposure prophylaxis.



**15 staff**

- 10 Epidemiologists
- 4 Epi Nurses
- 1 CDC Contractor

**1700** services provided to individuals

**36** outbreaks investigated

**3600** reportable diseases and conditions investigated

**45** surface antigen pregnant females served

**151** Hepatitis A vaccines

**343** Hepatitis B vaccines

**1400** animal exposure follow up

**70** rabies post exposure prophylaxis



# 2016 Reportable Diseases and Conditions

Campylobacteriosis	197	Legionellosis	31
Carbon Monoxide Poisoning	17	Leptospirosis	1
Chlamydia	8406	Listeriosis	2
Cholera (Vibrio cholerae Type O1)	1	Lyme Disease	8
Ciguatera Fish Poisoning	2	Malaria	9
Creutzfeldt-Jakob Disease (CJD)	2	Meningitis: Bacterial or Mycotic	1
Crimean-Congo Hemorrhagic Fever	0	Mumps	2
Cryptosporidiosis	41	Pertussis	34
Cyclosporiasis	2	Rabies: Possible Exposure	72
Dengue Fever	5	Salmonellosis	284
Ehrlichiosis - HME (Ehrlichia chaffeensis)	1	Shigellosis	105
Escherichia coli: Shiga Toxin-Producing (STEC) Infection	34	Strep pneumoniae Invasive Disease: Drug-Resistant	23
Giardiasis: Acute	71	Strep pneumoniae Invasive Disease: Drug-Susceptible	19
Gonorrhea	2454	Syphilis - Congenital - Early Unspecified	4
Gonorrheal Ophthalmia Neonatorum	2	Syphilis - Early Latent	260
Haemophilus influenzae Invasive Disease	15	Syphilis - Late Latent	297
Hansen's Disease (Leprosy)	1	Syphilis - Primary	95
Hepatitis A	8	Syphilis - Secondary	189
Hepatitis B: Acute	26	Typhoid Fever (Salmonella Serotype Typhi)	1
Hepatitis B: Chronic	477	Varicella (Chickenpox)	20
Hepatitis B: Surface Antigen in Pregnant Women	45	Vibriosis (Vibrio alginolyticus)	3
Hepatitis C: Acute	6	Vibriosis (Vibrio parahaemolyticus)	1
Hepatitis C: Chronic	1727	Vibriosis (Vibrio vulnificus)	2
Hepatitis E	1	Zika Virus Disease and Infection- Congenital	2
Influenza-Associated Pediatric Mortality	1	Zika Virus Disease and Infection- Non-Congenital	149
Lead Poisoning	61		

**15,217 Reportable Cases**



# Family Planning & Prenatal

Providing comprehensive prenatal and family planning services for families in Orange County.

## Our Services

### Routine low risk Prenatal Health care which include:

- Laboratory
- Referrals
- Prescriptions
- Physical Exams
- CenteringPrenatal care (group prenatal)
- CenteringParenting (group well care for mom/baby from birth to 2 years)

### Family Planning services to men and women which include:

- Wellness annual exams

- Birth control education/counseling
- Birth control methods including sterilization counseling and referral for affordable sterilization services for men and women
- Laboratory
- Referrals
- Reproductive life plan

**All services include a financial screening for assistance with Medicaid, insurance and a sliding fee scale for affordable access to care.**

 **50 staff**  
**4,749 clients**



Providing quality care one patient at a time!

# 10 Essential Health Services

## The Role We Play

**ES2: Diagnose and Investigate** — Health problems through routine STD screening, testing and treatments for all clients and their partners.

**ES3: Inform, educate, and empower** — People through the reproductive life plan for every family planning and prenatal client.

**ES4: Mobilize** — Community partners through active participation on the local Infant Mortality Task Force which includes multiple community partners and the sharing of our client reports and accomplishments in healthcare.

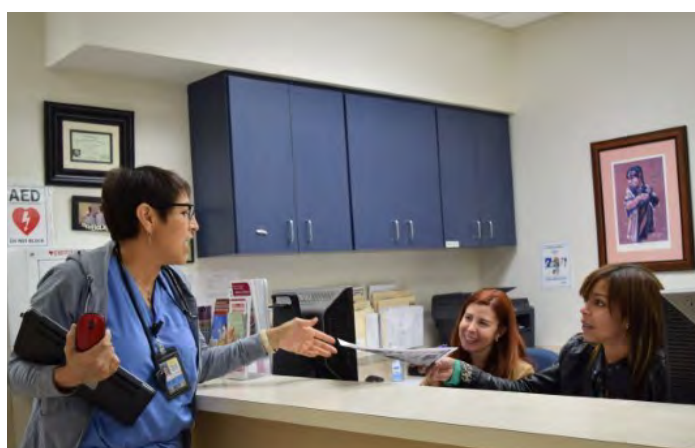
**ES7: Link** — People to needed personal health services which is done through client referrals to local health care partners to augment and enhance the total healthcare spectrum.

**ES8: Assure** — A competent public healthcare workforce by providing monthly trainings. These are provided through staff meetings for the program by internal and external healthcare experts and through the completion of online trainings recommended by Title X, MCH and HRSA grant entities.

**ES9: Evaluate** — Effectiveness and quality through our quality improvement project of record audits by each staff member on a monthly basis. This has improved documentation and mobilized efforts to update all documentation for improved clarity and concise verbiage.

## Our Goals

1. Provide easy access to low risk pregnant women for high quality prenatal care.
2. Provide evidence based group prenatal care using the CenteringPregnancy curriculum to decrease poor birth outcomes.
3. Provide evidence based woman/baby dyad group care using the CenteringParenting curriculum to decrease infant mortality.
4. Decrease health disparities and improve birth outcomes for Black and Hispanic pregnant women.
5. Provide Zika screening, testing, referral and case management for our pregnant clients and screening/testing referral for all non CHD clients.
6. Decrease teen pregnancies through outreach counseling/ education sessions and easy access to family planning services.
7. Decrease unplanned pregnancies by providing easy access to family planning services and establish a reproductive life plan to include long acting reversible contraception, annual wellness exams, laboratory testing and healthy lifestyle choices education for women and men.
8. Decrease the transmission of STDs in the community through routine screening, testing and treatment for the client and sexual partners.





# Immunizations

Vaccine Preventable Disease Program offering child and adult immunizations.



**14 staff**

**40-50 clients**

Minimum per day

## Our Services

The Immunizations program provides the following:

- Vaccine for Children (VFC) vaccinations to all eligible children,
- Adult and adolescent vaccinations (birth to death)
- Transferring out of state forms to certified 680 forms
- Complete religious exemption forms
- Complete college forms
- Education outreach
- Promote recommended and required vaccines

## Our Goal

To prevent vaccine-preventable diseases, minimize missed opportunities for vaccinations, increase overall immunization rates, educate the clients regarding the importance of vaccinating and the risk involved with waiting to immunize.

## Essential Health Services: Our Role

The immunizations program informs, educates, and empowers clients about health issues, enforces protocols to ensure safety and protect health, and assures a competent health workforce.

**7,584** Child Vaccines (PC-01)

**750** Adult Vaccines (PC-05)

**8,334** doses

Provided during the months of July, August and September 2016.

# School Health



## Our Goal?

*To promote, protect and improve the health of Orange County school students.*

In cooperation with the Department of Education, the School Health Services Program provides the services mandated in Florida statutes. School health services are intended to minimize health barriers to learning for public school students in pre-kindergarten through 12<sup>th</sup> grade.

### Our Services

Visitation to over 200 public schools with enrollment of over 200,000 students and consultation as needed for private schools. The staff reviews the kindergarten and 7<sup>th</sup> grade records for immunization and physical exam compliance. We follow up by sending letters, making phone calls as well as home visits. The following screenings are required for certain grades: vision, scoliosis, height/weight/BMI and hearing. The staff plays a role in performing the screenings as well as gathering data for reporting in the Health Management System. In addition, nurses perform site reviews and classroom instructions on health topics.



**16 staff**  
**200+ schools**

- 2 Community Health Nursing Supervisors
- 7 Registered Nurses
- 1 Licensed Practical Nurse (LPN)
- 6 Health Support Technician (HST)

**Healthy Schools. Healthy People.**

Continued on next page

# 10 Essential Health Services

## The Role We Play

**ES3: Inform, educate, and empower** — Through the provision of health education in schools and community events.

**ES4: Mobilize** — During the spring and summer, the School Health Program partners with the Orange County School Board to provide immunizations to school-age students.

**ES5: Develop policies and plans** — Our staff is a part of the special needs shelter team where a COOP policy is in place.

**ES7: Link** — The staff in our program works diligently to link people in need to additional services.

**ES10: Research** — Regarding communicable diseases outbreaks, the school Health Program works with the epidemiology department to resolve issues.

### Our Efforts

During the spring and summer of 2016 the School Health Program partnered with the Orange County School Board and provided a total of **670 vaccines** to **320 students**.



# Healthiest Weight

## Our Goal?

*To improve the health of Orange County through healthy eating, physical activity, and the promotion of a healthy lifestyle.*

## Did you Know?

- The #1 public health threat to Florida's future is unhealthy weight.
- 1 out of 3 kids are now considered to be overweight or obese.
- 65% of adults in Florida are at an unhealthy weight.
- The costs of care for chronic diseases from obesity alone are estimated to be 34 billion dollars over the next 17 years.

Currently, only **36%** of Floridians are at a healthy weight. On our current trend, by 2030, almost 60 percent will be obese. Additionally, six out of ten children born today will be obese by the time they graduate high school.

Over the next 20 years in Florida, obesity is expected to contribute to millions of cases of preventable chronic diseases such as type 2 diabetes, heart disease and cancer, costing an estimated \$34 billion. To address this

important public health issue, the Department of Health launched the Healthiest Weight Initiative in January 2013.

**Healthiest Weight Florida** is a public-private collaboration bringing together state agencies, not for profit organizations, businesses, and entire communities to help Florida's children and adults make consistent, informed choices about healthy eating and active living.

### Strategies to Address Healthy Weight in Florida

**Strategy #1** Increase opportunities for physical activity

**Strategy #2** Make healthy food available everywhere

**Strategy #3** Promote health in the worksite

**Strategy #4** Strengthen schools as the heart of health

**Strategy #5** Market what matters for a healthy life



Continued on next page



## Our Efforts

In 2016, we have reached **over 4,000 people** through the following:

- It's Just Yoga Festival
- Every Little Thing! Healthy Family Expo
- Legends Students Rock! (Every Kid Healthy Week event)
- Get Fit Day
- Jaguar Roundup
- Clean-up Day (Parramore & Lake Orlando)
- American Family Expo
- Meadows on the Move
- Shake it Off! Tour
- Health and Education Fair
- Back to School Bash
- Florida 5K Walk/Run
- Orlando Sentinel's annual Pink Bash
- Boys & Girls Club SOAR event
- Community Resources and Health Fair
- World AIDS Day
- Howard Phillips Center for Families Annual Christmas Party



To learn more about local Healthiest Weight Florida efforts, contact DOH-Orange Healthiest Weight Coordinator, Audrey Alexander, at [Audrey.Alexander@flhealth.gov](mailto:Audrey.Alexander@flhealth.gov).



# World Heart Day

## Hands Only CPR Training



In celebration of **World Heart Day**, Sept. 29, the Florida Department of Health in Orange County promoted heart health by hosting Hands-Only™ CPR training at nine different locations as well as hosting a kick-off event with county officials. World Heart Day is an annual event created by the World Heart Federation to

remind everyone that heart disease and stroke are the world's leading causes of death.

In Florida, 23.4 percent of adults age 65 and older reported in 2013 that they had been told by a healthcare provider that they had a heart attack, coronary heart disease or stroke. Heart disease was the leading cause of death in Florida in 2014 and is the

number one killer of women, taking more lives than all forms of cancer combined.

Hands-Only™ CPR is CPR without mouth-to-mouth breaths. It is recommended for use by people who see a teen or adult suddenly collapse in an “out-of-hospital” setting (such as at home, at work or in a park).

### It consists of two easy steps:

1. **Call 9-1-1** (or send someone to do that); and
2. **Push hard and fast in the center of the chest.**

Hands-Only™ CPR performed by a bystander has been shown to be as effective as conventional CPR with mouth-to-mouth breaths in the first few minutes of sudden cardiac arrest.



A news conference was held at our Central Location announcing opportunities for people to be trained in hands-only CPR at nine Central Florida locations on World Heart Day, Thursday September 29<sup>th</sup>.



Dr. Sherin demonstrating Hands-Only CPR



MRC Coordinator Elizabeth Hamlett instructing Training Specialist Jennifer Mills on Hands-Only CPR

Elizabeth Hamlett, Jennifer Mills and Dr. Kevin Sherin were interviewed about World Heart Day and Hands-Only CPR Training. Jennifer Mills shared her story of saving the life of a person who collapsed while attending a local event using the CPR skills she learned. Click on the link below to view the story.

<http://www.clickorlando.com/getting-results/getting-results-for-your-health/free-cpr-training-to-orange-county-residents-on-thursday-sept-29>

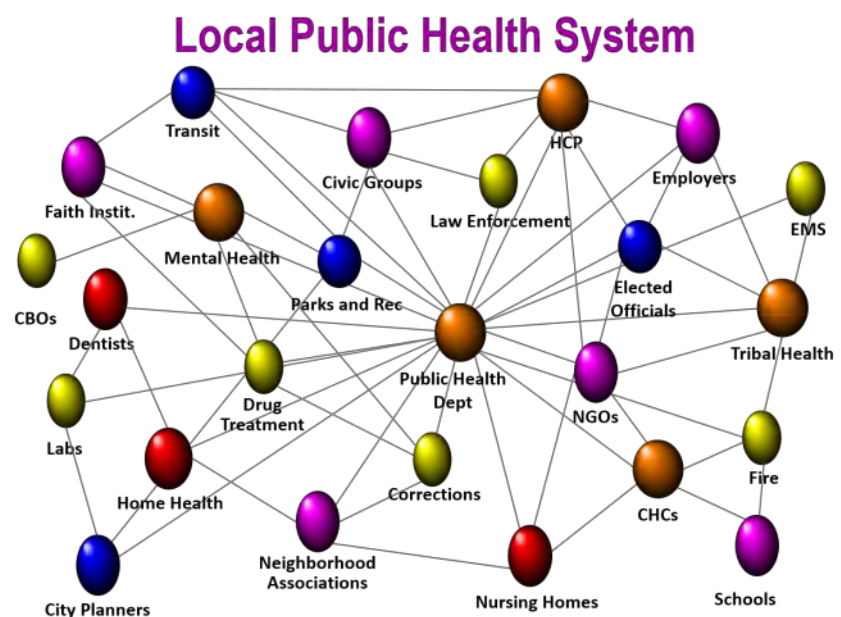
To learn more about World Heart Day and the actions you can take, please visit [worldheartday.org](http://worldheartday.org).

# All Roads Lead to QUALITY

In 2016, the Office of Performance and Quality Improvement (OPQI) hosted the Local Public Health System Assessment (LPHSA). Under the guidance of DOH-Orange Population Health & QI Data Manager, Ellis Pérez, MPH, a total of 53 participants gathered to evaluate our public health system. The LPHSA is designed to help health departments and public health system partners create a snapshot of where they are relative to the National Public Health Performance Standards and to progressively move towards refining and improving outcomes for performance across the public health system.

The LPHSA was structured around:

- **10 Essential Health Services**
- **30 Model Standards** which served as quality indicators that are organized into the 10 Essential Public Health Service areas in the instrument and address the three core functions of Public Health.
- **Priority of Model Standards** questionnaire
- **Local Health Department contribution** to the 10 Essential Health Services.



The Local Public Health System (LPHS) is defined as “a network of...public, private and voluntary...entities with differing roles, relationships, and interactions whose activities combined contribute to the health and well-being of the community” (NACCHO).

## Purpose?

*To promote continuous improvements that will result in positive outcomes.*

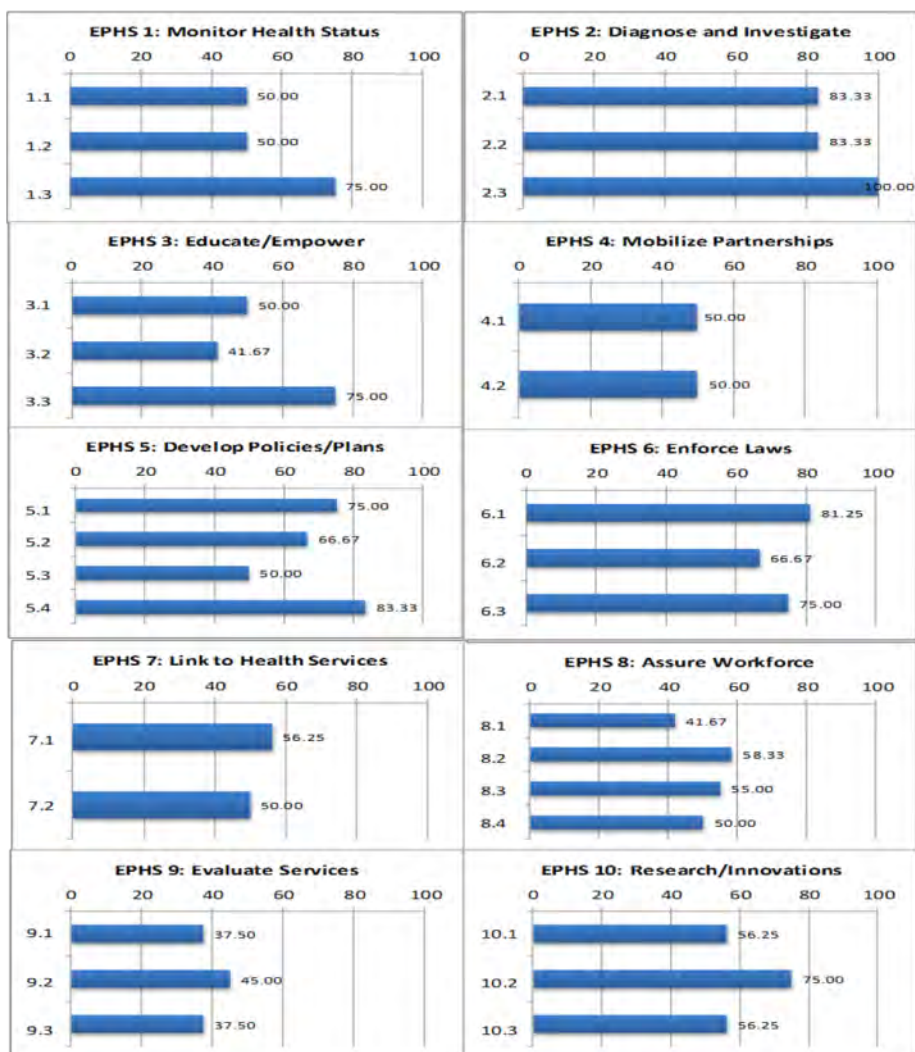
The results from the assessment will be used to:

1. Understand current system functioning, performance, identify and prioritize strengths, weaknesses, and opportunities for improvements.
2. Articulate the value that quality improvement initiatives will bring to the public health system.
3. Develop an initial workplan with specific quality improvement strategies to achieve said goals.
4. Re-assess the progress of improvement efforts at regular intervals,

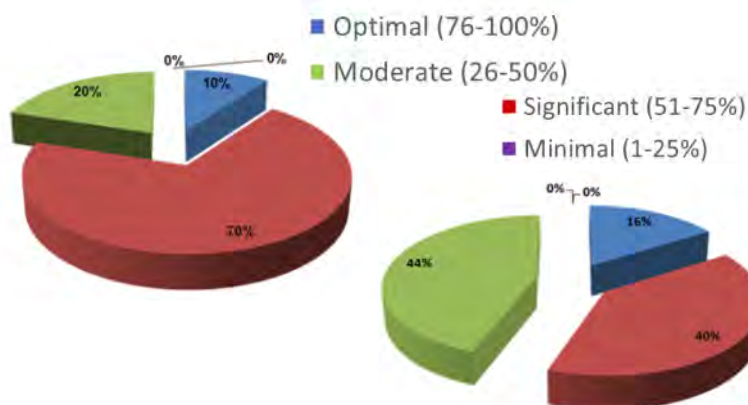
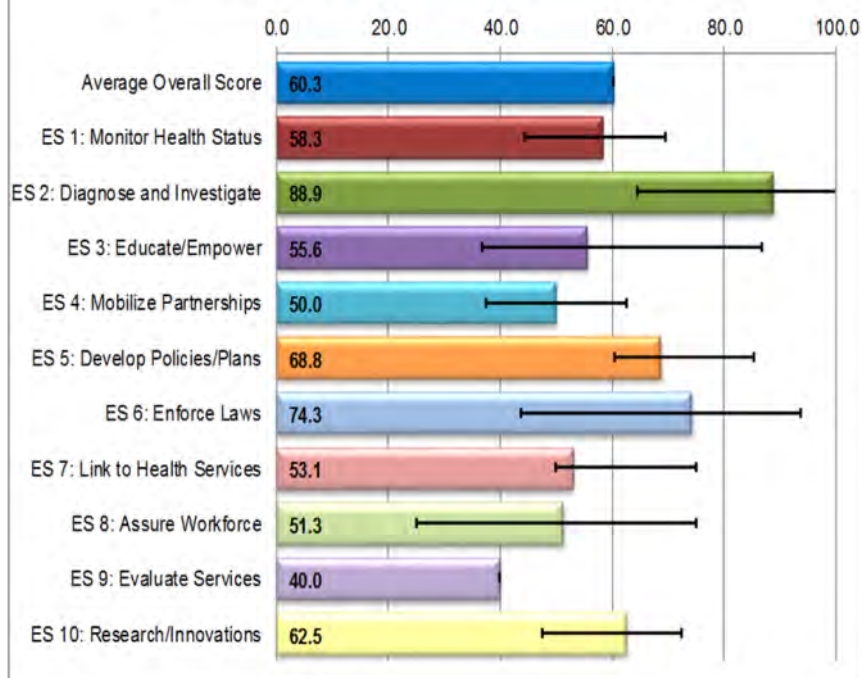
## Results

Based upon the responses the participants provided during the assessment, an average was calculated by combining all of the scores from each model standard performance measure score. The average score was then inputted in the National Public Health Performance Standards database, where it then generated the average score to each Essential Service and overall.

<b>Optimal Activity (76-100%)</b>	Greater than 75% of the activity described within the question is met.
<b>Significant Activity (51-75%)</b>	Greater than 50%, but no more than 75% of the activity described within the question is met.
<b>Moderate Activity (26-50%)</b>	Greater than 25%, but no more than 50% of the activity described within the question is met.
<b>Minimal Activity (1-25%)</b>	Greater than zero, but no more than 25% of the activity described within the question is met.
<b>No Activity (0%)</b>	0% or absolutely no activity.



## Summary of Average ES Performance Score



Model Standards by Essential Services	Performance Scores	Priority Rating	Agency Contribution Scores
<b>ES 1: Monitor Health Status</b>	<b>58.3</b>	<b>8.3</b>	<b>75.0</b>
1.1 Community Health Assessment	50.0	8.0	75.0
1.2 Current Technology	50.0	8.0	75.0
1.3 Registries	75.0	9.0	75.0
<b>ES 2: Diagnose and Investigate</b>	<b>88.9</b>	<b>9.0</b>	<b>91.7</b>
2.1 Identification/Surveillance	83.3	9.0	100.0
2.2 Emergency Response	83.3	9.0	100.0
2.3 Laboratories	100.0	9.0	75.0
<b>ES 3: Educate/Empower</b>	<b>55.6</b>	<b>7.7</b>	<b>100.0</b>
3.1 Health Education/Promotion	50.0	8.0	100.0
3.2 Health Communication	41.7	8.0	100.0
3.3 Risk Communication	75.0	7.0	100.0
<b>ES 4: Mobilize Partnerships</b>	<b>50.0</b>	<b>8.0</b>	<b>75.0</b>
4.1 Constituency Development	50.0	8.0	75.0
4.2 Community Partnerships	50.0	8.0	75.0
<b>ES 5: Develop Policies/Plans</b>	<b>68.8</b>	<b>8.5</b>	<b>81.3</b>
5.1 Governmental Presence	75.0	9.0	75.0
5.2 Policy Development	66.7	8.0	75.0
5.3 CHIP/Strategic Planning	50.0	8.0	75.0
5.4 Emergency Plan	83.3	9.0	100.0
<b>ES 6: Enforce Laws</b>	<b>74.3</b>	<b>8.3</b>	<b>58.3</b>
6.1 Review Laws	81.3	8.0	50.0
6.2 Improve Laws	66.7	8.0	50.0
6.3 Enforce Laws	75.0	9.0	75.0
<b>ES 7: Link to Health Services</b>	<b>53.1</b>	<b>7.0</b>	<b>75.0</b>
7.1 Personal Health Service Needs	56.3	7.0	75.0
7.2 Assure Linkage	50.0	7.0	75.0
<b>ES 8: Assure Workforce</b>	<b>51.3</b>	<b>7.0</b>	<b>68.8</b>
8.1 Workforce Assessment	41.7	7.0	75.0
8.2 Workforce Standards	58.3	7.0	75.0
8.3 Continuing Education	55.0	7.0	75.0
8.4 Leadership Development	50.0	7.0	50.0
<b>ES 9: Evaluate Services</b>	<b>40.0</b>	<b>6.0</b>	<b>75.0</b>
9.1 Evaluation of Population Health	37.5	6.0	75.0
9.2 Evaluation of Personal Health	45.0	6.0	50.0
9.3 Evaluation of LPHS	37.5	6.0	100.0
<b>ES 10: Research/Innovations</b>	<b>62.5</b>	<b>7.0</b>	<b>58.3</b>
10.1 Foster Innovation	56.3	7.0	50.0
10.2 Academic Linkages	75.0	7.0	75.0
10.3 Research Capacity	56.3	7.0	50.0
<b>Average Overall Score</b>	<b>60.3</b>	<b>7.7</b>	<b>75.8</b>
<b>Median Score</b>	<b>56.9</b>	<b>7.8</b>	<b>75.0</b>



The **Prudential Productivity Awards** are made possible through the generosity of Prudential, as Anchor Sponsor, and the vision of the late J.E. Davis and A.D. Davis, co-founders of Winn-Dixie Stores Inc. and co-founders of Florida TaxWatch. Since 1989, the Awards program has publicly recognized and rewarded state employees and work units whose work significantly and measurably increases productivity and promotes innovation to improve the delivery of state services and save money for Florida taxpayers and businesses. Over the 28-year program, more than 16,000 nominations have been received, and awards have been given to state employees for saving or maximizing state dollars to the tune of more than \$9.2 billion.

## Prudential Productivity Award Winners

DOH-Orange was honored with three Florida Prudential Productivity Awards in 2016 for creating and implementing innovative solutions that improve the delivery of state services and save money for Florida taxpayers and businesses.

1. Kari Lara-Murabito received an individual award for the use of geographical information system (GIS) to map improperly maintained septic systems throughout Orange County and provide data to show where a sanitary sewer system would be environmentally beneficial. This project would save the citizens of Orange County \$5,000,000.
2. DOH-Orange in collaboration with the Healthy Start Coalition of Orange County and Heart of Florida United Way is in the second year of The Nurse-Family Partnership Program which is designed for families living in high risk areas of Orange County. This evidence-based program provides low-income mothers with intensive home visiting services during her pregnancy and for two years after the baby is born. Orange County will save \$1,552,200.00 in medical expenses. The winning team members included: Penny Smith, Ann McLeod, Keturah Corneille, Tara McHugh, Linda Sutherland, and Ellen Geiger.
3. The Walk Around the World virtual experience encouraged staff to walk more often while tracking their progress on a virtual world map. This Employee Fitness Initiative was established to encourage DOH-Orange staff to be more active and to promote walking breaks from sitting. As a result of this initiative DOH-Orange saved an estimated \$15,000. Team members included: Karen Johnson, and Marcus Chinfatt.



# PUBLIC HEALTH THE FLORIDA WAY

CELEBRATE  
NATIONAL  
PUBLIC  
HEALTH  
WEEK  
APRIL 4-10



2016  
FIRST  
ACCREDITED  
PUBLIC HEALTH  
DEPARTMENT  
SYSTEM IN THE U.S.



During National Public Health Week 2016, the Florida Department of Health highlighted its recent national accreditation through the Public Health Accreditation Board (PHAB) and the efforts of public health professionals across the state. A variety of programs and activities are carried out by the department and its state, local and community partners in order to promote, protect and improve the health of Florida residents and visitors.

Florida became the first state in the nation to receive national accreditation as an integrated department of health through PHAB. Accreditation by PHAB signifies that the department, including the state health office and all 67 county health departments, is meeting national standards for ensuring that essential public health services are provided in the community. Accreditation will continue to guide the department's fulfillment of the [10 Essential Public Health Services](#) and will lead to continuous improvement in service, value and public accountability.

The Florida Department of Health in Orange County (DOH-Orange) honored outstanding community leaders and health department staff as 2016 Public Health Heroes during the National Public Health Week (NPHW) celebration. Public Health Heroes were celebrated for their many accomplishments in the community and in the area of public health as they continue to move health forward in Florida.

National Public Health Week was celebrated April 4–10, 2016 with the theme, “Healthiest Nation 2030”. Americans are living 20 years longer than their grandparents’ generation, thanks largely to the work of public health. Still, people in many other high income countries live longer and suffer fewer health issues than we do. This generation can overcome this challenge and work to achieve the goal of making the U.S. the Healthiest Nation in One Generation by 2030.



From left to right-back row: Lesli Ahonkai, Dr. Kevin Sherin, Carmem Carmo, Dr. Marie-Jose Francois, Assistant Chief Hezedeane Smith, Sarah Stack, Samuel Lopez. Front row: Dr. Chianta Lindsey, Kelly Rogers, and District Chief Matthew Ngedly.



From left to right: Dr. Kevin Sherin, Lesli Ahonkai, Joy Bayley, Karen Johnson, Blanca Flores, Ida Starks, and Luz Reyes.

*Healthiest Nation 2030*  
**April 4 - 10, 2016**



## National Minority Health Month

The Florida Department of Health in Orange County (DOH-Orange) celebrates National Minority Health Month with the award presentation of the Dr. Alfred L. Bookhardt Award for Health Equity. This award honors Dr. Alfred L. Bookhardt (1928-2014) who began his medical practice in Orlando during the Civil Rights movement. He treated African American patients who were refused care by white physicians. He also co-founded the Central Florida Medical Society and Guardian Care, the first long term care facility in Orlando for African Americans.

The annual Health Equity Award was created by the Florida Department of Health in Orange County as a way to recognize Orange County physicians for their dedication and commitment to increasing access to healthcare with a goal of achieving health equity in Central Florida.

The 2016 Health Equity Award was presented to Dr. Maurice W. Mascoe, Health Central Hospital. Dr. Mascoe completed a B.Sc. in Biochemistry at Binghamton University, a part of the State University of New York system. He then matriculated at Howard University College of Medicine. After medical school, Dr. Mascoe returned to New York City where he completed an Internal Medicine internship at Harlem Hospital Center, and an Emergency Medicine residency at Lincoln Hospital Center in the South Bronx.

Dr. Mascoe was a founding member of the Charles

Drew Premedical Society. The purpose of the organization was to expose, recruit and educate students from the medically under-represented strata of our society.

Dr. Mascoe continues to work for his community and over the years in Central Florida, he has been involved in many outreach, educational and philanthropic organizations. He has served on the Advisory Council of many important organizations such as the Wayne Densch YMCA and the Valencia College Paramedic Program. He is a mentor to middle school children who are interested in STEM careers.

Through his current work as President of the Central Florida Medical Society, Dr. Mascoe is working to galvanize support to achieve better access to health care, more diversity in health care providers and better health education and awareness.



Dr. Mascoe alongside Mrs. Bookhardt, widow of the late Dr. Alfred L. Bookhardt.



From left to right: Art Howell, Dr. Lauren Josephs, Maureen Kersmarski, Dr. Maurice W. Mascoe, Jennie Joseph, Karen Wint, Mrs. Ola Bookhardt, Dr. Kevin Sherin.

In addition to the Dr. Alfred L. Bookhardt Award for Health Equity, the Florida Department of Health began to recognize other community partners who also work continuously to move health equity forward in Orange County. The Public Health Equity Hero Award serves as a mechanism to honor and recognize these very special individuals who work every day to improve the lives of the Orange County residents and visitors. These heroes personify the spirit of public health through commitment to accelerating health equity throughout the community and in turn helping us become the healthiest nation by 2030. Those recognized in 2016 as Health Equity Heroes were: Karen Wint, Center for Multicultural Wellness and Prevention, Maureen Kersmarski, Founding member and chair of PCAN, Jennie Joseph, Commonsense Childbirth, Inc., Dr. Lauren Josephs, Vanguard Group, Inc., and Dr. Marie-Jose Francois, Center for Multicultural Wellness and

Prevention. Dr. Kevin Sherin, director of the Department of Health in Orange County was also recognized by his DOH-Orange staff as a Public Health Equity Hero for all the exceptional work he does in the community.

## Health Equity

*Basic principle that all people, despite race/ethnicity, gender, age, religion, income, geographic location, sexual orientation, or ability have equal opportunity to resources enabling them to lead healthy lives.*

# Financial Highlight



## Consolidated Statement of Operations FY 2015/2016

### REVENUES

General Revenue	\$8,908,899.00
Other State Funds	\$317,049.00
Federal Funds	\$9,273,061.00
Local Revenue	\$16,963,245.00
<b>Total</b>	<b>\$35,462,254.00</b>

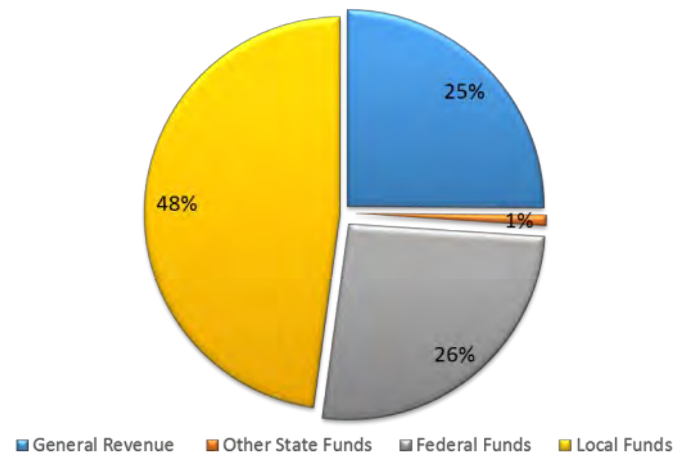
### EXPENSES

Salaries	\$25,203,644.00
Other Personnel Services	\$1,127,272.00
Expenses	\$6,287,944.00
Other Capital Outlays	\$137,652.00
Transfers	\$409,317.00
*Certified Forward Expenditures	\$1,244,645.00
<b>Total</b>	<b>\$34,439,234.00</b>

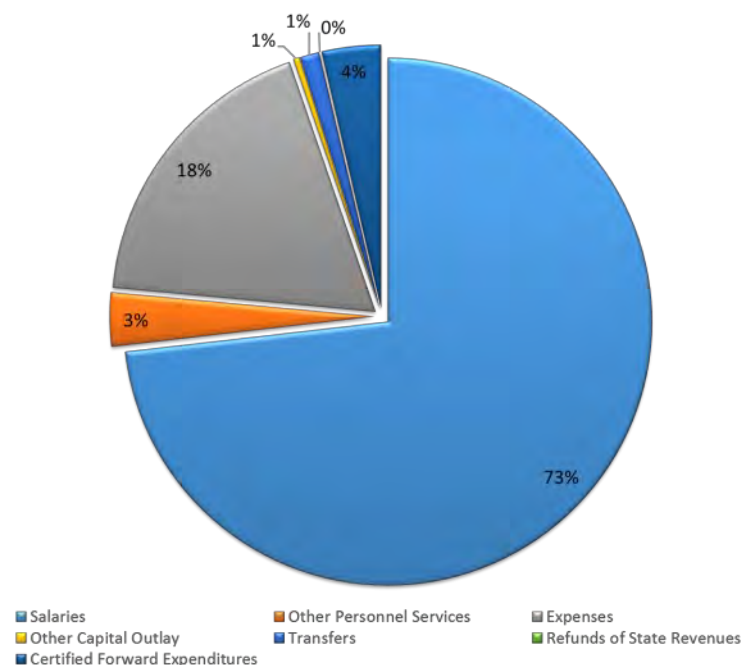
<b>Reserve</b>	<b>\$1,023,020.00</b>
----------------	-----------------------

\*Expenses paid in 2015-2016 from prior fiscal year.

Revenues



Expenditures



## [By Department Area]



**Communicable  
Disease Services**

**9,427**



**Family Planning  
Prenatal Health**

**4,008**



**Dental**

**2,869**



**Immunizations**

**8,292**



**Pharmacy**

**609**



**Other**

**6,216**

# Personal Health Services

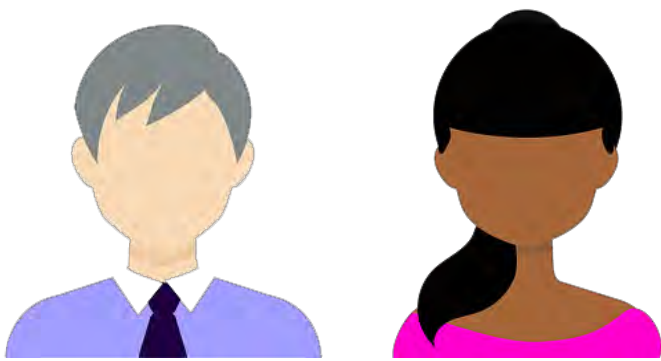


**31,421**  
Clients Served

Data Source: DOH-Orange Health Management System

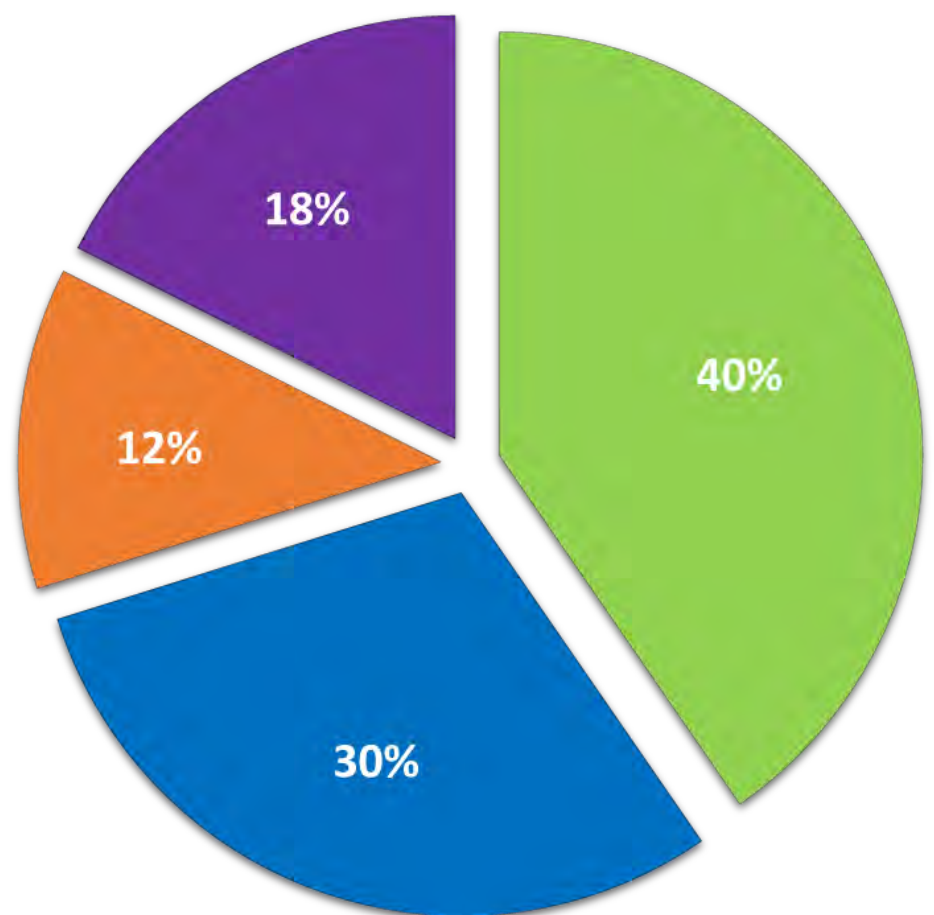
# Personal Health Services

[By Race/Ethnicity & Age Group]



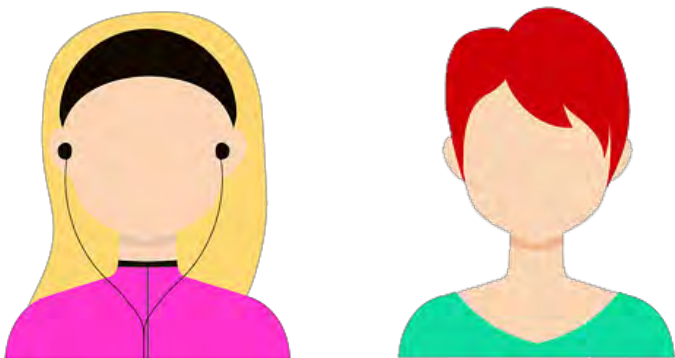
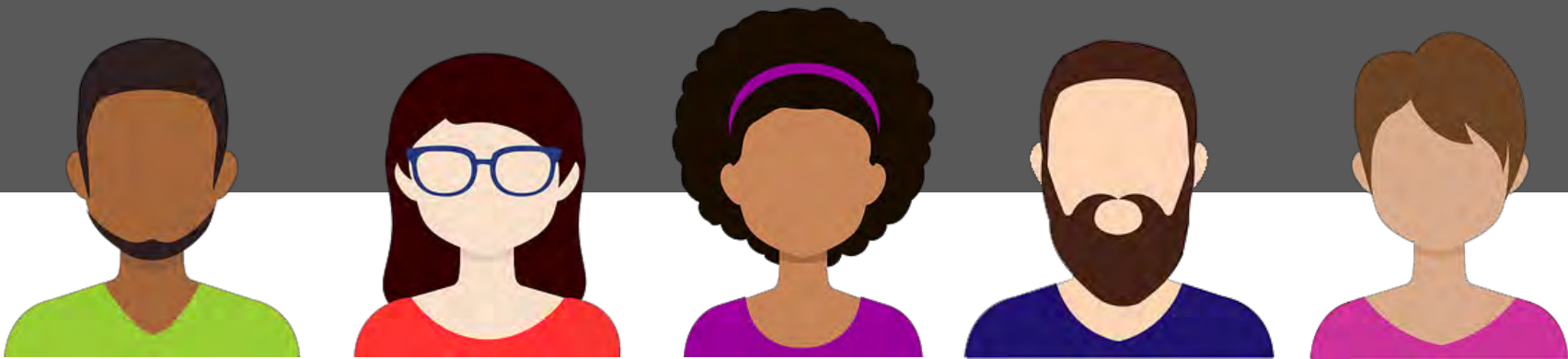
**Hispanic** 12,689  
**Black/African American** 9,359  
**White** 3,858  
**Other or Unknown** 5,515

CLIENT COUNT BY RACE/ETHNICITY

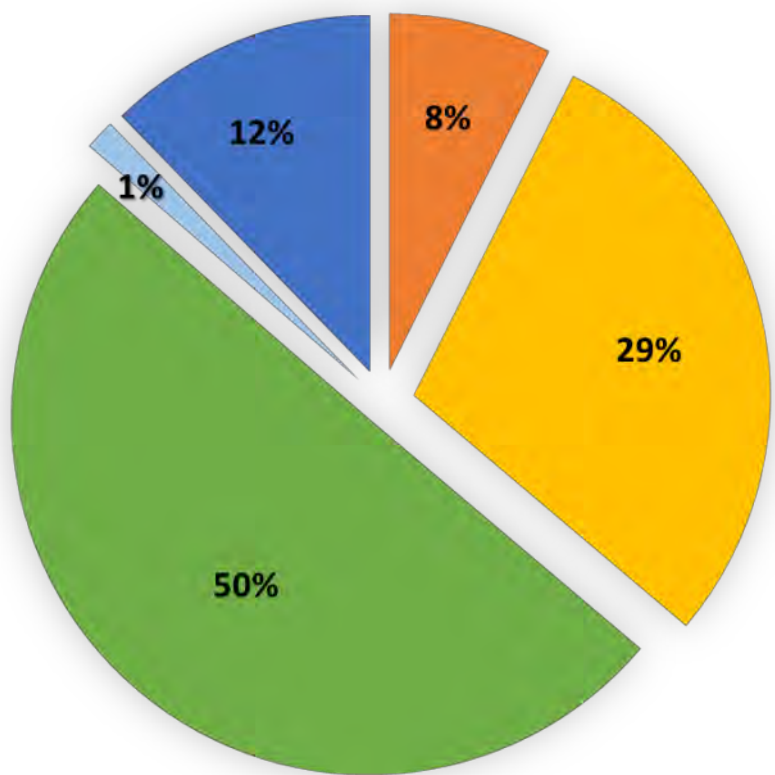


■ Hispanic    ■ Black/African American  
■ White    ■ Other or Unknown

Data Source: DOH-Orange Health Management System



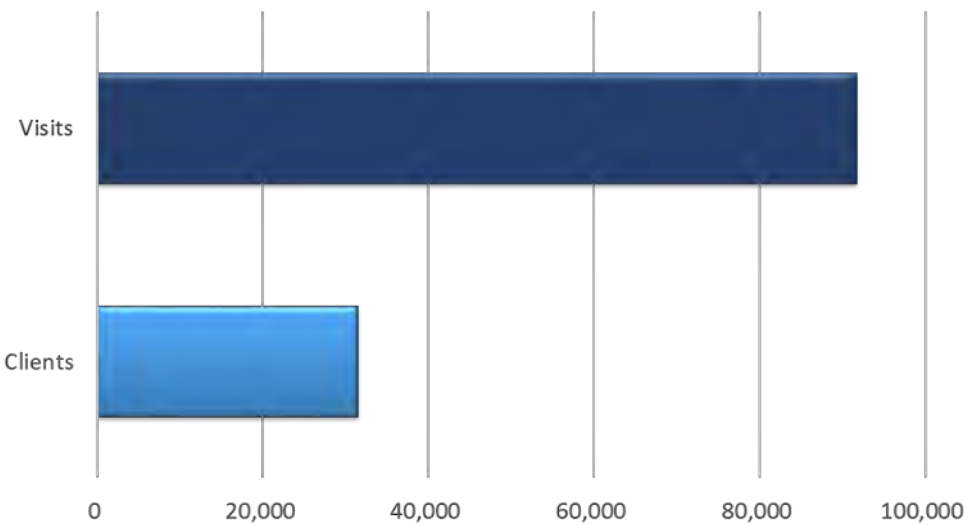
CLIENT COUNT BY AGE GROUP



**<5 Years** 2,319  
**5-18 Years** 9,048  
**19-64 Years** 15,769  
**65 Years or Older** 431  
**Other or Unknown** 3,854

■ <5 Years Old      ■ 5-18 Years Old  
■ 19-64 Years Old    ■ 65 Years or Older  
■ Other or Unknown

CLIENTS vs. VISITS



**Total Visits**  
**91,606**

**Total Clients**  
**31,421**



# Locations

**Administration Building**

6101 Lake Ellenor Drive  
Orlando, Florida 32809  
407-858-1400

**Apopka Health Center**

1111 North Rock Springs Road  
Apopka, Florida 32712  
**WIC Program** 407-858-1494

**Central Health Center**

832 W. Central Boulevard  
Orlando, Florida 32805  
**Main Number** 407-836-2600  
**WIC Program** 407-858-1494  
**Central Express** 407-858-1487

**Church Street Vital Statistics Office**

807 West Church Street  
Orlando, Florida 32805  
407-836-7128

**Eastside Health Center**

12050 East Colonial Drive  
Orlando, Florida 32829  
**WIC Program** 407-858-1494  
**Family Planning/Prenatal Health** 407-858-1487

**Hoffner Health Center**

5449 South Semoran Boulevard  
Orlando, Florida 32826  
**Dental (Suite 19B)** 407-254-1925  
**WIC Program** 407-858-1494

**Lake Underhill Health Center**

5730 Lake Underhill Road  
Orlando, Florida 32807  
**WIC Program** 407-858-1494

**Lila Mitchell Health Center**

5151 Raleigh Street  
Orlando, Florida 32811  
**Family Planning/Prenatal Health** 407-858-1487

**Ocoee Health Center**

475 West Story Road  
Ocoee, Florida 34791  
**Healthy Start** 407-254-6822

**Southside Health Center**

6101 Lake Ellenor Drive  
Orlando, Florida 32809  
**WIC Program** 407-858-1494  
**Family Planning/Prenatal Health** 407-858-1487

**Environmental Health**

1001 Executive Center Drive, Suite 200  
Orlando, Florida 32803  
407-858-1497

**Westside Health Center**

6218 West Colonial Drive, Suite 232  
Orlando, Florida 32808  
**WIC Program** 407-858-1494

**Winter Garden Health Center**

13275 West Colonial Drive  
Winter Garden, Florida 34787  
**WIC Program** 407-858-1494

# Programs & Services

- **Family Planning/Prenatal (407-858-1487)** Birth control services for people of child-bearing age. Prenatal and postpartum medical services. Coordination with delivery at hospital of your choice. Will complete temporary Medicaid application in order to have same day care.
- **Healthy Start (407-254-6822)** Prenatal and infant services promoting positive birth outcomes, normal growth and development and support to ensure every infant a healthy start. Care coordination provided by Healthy Start, Nurse Family Partnership and Bellies, Babies and Beyond programs.
- ⇒ **MomCare** Women receive linkage and education on the importance of early prenatal care, the Family Planning Waiver, assistance in choosing a pediatrician for their baby, and instructions on how to activate their baby's Medicaid.
- **Women, Infants, and Children-WIC (407-858-1494)** Provides nutrition and diet counseling, free food, breastfeeding support, and referrals for health care to eligible participants.
- **School Health (407-858-1438)** Ensures student's health and immunization records comply with school entry requirements. Provides student health screenings for vision, hearing, scoliosis, and growth and development, as well as care to students in school clinics, and classroom health education.
- **Dental Health (407-254-1925)** Offers preventive and restorative services for children including cleanings, fillings, sealants, and extractions. Adult services are limited to emergency care for Medicaid eligible clients.
- **Neighborhood Center for Families (407-858-1438)** (Bithlo/Christmas, Englewood, Taft, Union Park) Responds to the needs of children and families. Providing health screenings, education, immunizations and senior services.
- **Tuberculosis (407-836-2648)** Diagnosis and treatment of Tuberculosis through case management, direct observed therapy, contact investigation, and testing.
- **Refugee Health (407-836-7105)** Provides physicals, health assessment, and immunization services for refugees and asylees.
- **Sexually Transmitted Diseases (407-836-2650)** Provides diagnosis and treatment of STD's, surveillance, follow-up on STD cases and partner counseling and referral. HIV and AIDS testing available.
- **HIV/AIDS Services (407-836-2680)** Anonymous and confidential HIV testing and counseling. Determines financial eligibility for Ryan White services including medical care, AIDS Drug Assistance Program (ADAP), case management, pharmacy services, mental health and nutrition support.



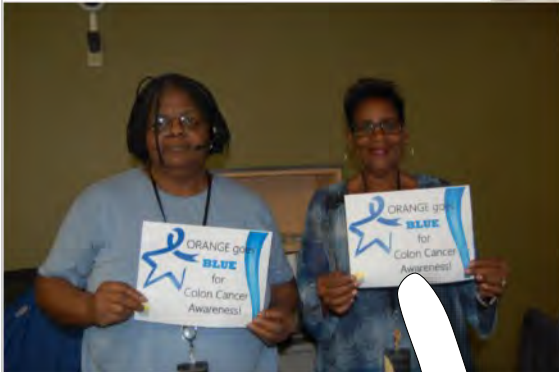
- **Environmental Health (407-858-1497)** Monitors conditions within the community that could present a threat to health and safety of the public. Environmental Health Specialists work in the community to ensure the Public Health and monitor any potential problems.
- **Epidemiology (407-858-1420)** Track, monitor and respond to reports of diseases and other health related states. Develop and implement strategies for preventing and controlling diseases to protect the public. Programs include: Rabies Prevention, Hepatitis Prevention and Perinatal Hepatitis B Prevention.
- **Emergency Operations (407-858-1498)** Ensures preparedness planning and essential public health services during disasters. Coordinates with local, federal, and state agencies and organizations. Provides education and speakers to the community and vulnerable populations.
- **Vital Statistics (407-836-7128)** Registration and issuance of all certified Florida birth records along with Florida death records from 2009 to present. Provides information and applications for amendments and paternity acknowledgement.
- **Office of Performance & Quality Improvement (407-858-1400)** Houses areas of population health, health equity, healthiest weight, and health promotion.
- **Research (407-615-1576)** Builds relationships with colleges and universities. Handles administrative functions to identify Phase III or Phase IV clinical trials.
- **Volunteer Services (407-836-7102)** Recruits and coordinates volunteers and interns. Promotes opportunities for experience in working in the public health field while making a difference.



ORANGE goes  
**BLUE**  
for  
Colon Cancer  
Awareness!



 colon  
cancer  
awareness  
month  
  
COLON CANCER ALLIANCE



we



**STAND UP**  
for children







[orange.floridahealth.gov](http://orange.floridahealth.gov)



Florida Department of Health  
in Orange County  
6101 Lake Ellenor Drive  
Orlando, FL 32809  
(407) 858-1400

*Connect with us!*

/FLDepartmentofHealth



@HealthyFla

/fldoh



/HealthyFla